

VANCOUVER

1985

AMIS

CMS

SEM

SMT

P
R
O
G
R
A
M
M
E

Fifty-first Annual Meeting
of the
**AMERICAN
MUSICOLOGICAL SOCIETY**
(Hotel Vancouver)

☆

Twenty-eighth Annual Meeting
of the
COLLEGE MUSIC SOCIETY
(Hyatt Regency Hotel)

☆

Thirtieth Annual Meeting
of the
**SOCIETY FOR
ETHNOMUSICOLOGY**
(Hyatt Regency Hotel)

☆

Eighth Annual Meeting
of the
SOCIETY FOR MUSIC THEORY
(Four Seasons Hotel)

7-10 November 1985
Vancouver, British Columbia

*The Department of Music of the
University of British Columbia is
honoured to host the first joint
meeting of the four Societies.*

Important note: Unless otherwise indicated, Locations of Society functions are as follows:

AMS Hotel Vancouver
CMS and SEM Hyatt Regency
SMT Four Seasons

Information concerning **REGISTRATION** and **EXHIBITS** is given on p. 28. **TOURS** are included in the *Conference Overview*, pp. 20–27.

The Robson Square Media Centre is at Hornby and Georgia, entered behind the Vancouver Art Gallery.

Wednesday, 6 November

3:00–11:00—**SEM Executive Board Meeting**
 (Cavendish Room)

4:00–6:00, 7:30—**AMS Board Meeting** (Tweedsmuir Room)

Thursday, 7 November

9:00–12:00—**AMS Board Meeting** (Tweedsmuir Room)

9:00–2:00—**SEM Executive Board Meeting**
 (Cavendish Room)

9:00–5:00—**CMS Board Meeting** (Turner Room)

9:30–11:30—**SMT Publications Committee Meeting**
 (Salon Montague)

12:00–2:00—**SMT Executive Board Meeting** (Oak Room)

2:00–5:00—**AMS PAPERS**

Aspects of Antiquity (Board Room)

Calvin Bower (University of Notre Dame), Chair

Martha Maas (Ohio State University): “The Evolution of the Greek Kithara”

Thomas J. Mathiesen (Brigham Young University): “The Ancient Greek Aulos: Literature and Reconstruction”

André Barbera (University of Notre Dame): “Who Wrote *Settie canonis?*”

Linda Austern (Cornell University): “Marston’s *Sophomista* and the English Renaissance View of Ancient Music”

Northern Renaissance (Pacific Ballroom)

Leeman Perkins (Columbia University), Chair

Louise Litterick (Mount Holyoke College): “Fixed Form in Perspective: A Reappraisal”

Honey Meconi (Harvard University): “Chansons Attributed to La Rue in French Prints: A Change of Style?”

RESPONDENT: J. Evan Kreider (University of British Columbia)
 Kristine K. Formey (California State University, Long Beach): “The Music-Book Trade in Sixteenth-Century Antwerp”

William F. Prizer (University of California, Santa Barbara): “The Order of the Golden Fleece and Music”

Eighteenth-Century Keyboard Music

(Joint Session, **AMS/SMT**) (Social Suite West)

Frederick Hammond (University of California, Los Angeles), Chair

Linton Powell (University of Texas, Arlington): “The Keyboard Music of Sebastian de Albero: An Astonishing Literature from the Orbit of Scarlatti”

Bruce Gustafson (Franklin and Marshall College): “Madame

Brillon and the Transition from Harpsichord to Piano in France”
 Mark Lindley (Regensburg, W. Germany): “J.S. Bach’s Tuning”

Thursday

Schubert and Chopin (Vancouver Island Room)

Rufus Hallmark (City University of New York, Queens College), Chair

Richard Kramer (State University of New York, Stony Brook):

“Schubert’s Goethe: Of Fragments, Cycles, and the Organic”

Ann Fehn and Jürgen Thyra (University of Rochester/Eastman School of Music): “The Influence of Poetic Structure on German *Lieder*: The Ghazal and Its Musical Settings”

Ivan F. Waldbauer (Brown University): “Ornato Technique and Sonata Form in Schubert, Piano Sonata in A, D. 959”

Charles J. Smith (University of Connecticut): “A Study of Connections: Chopin’s Last-Minute Revisions in the Autograph of Op. 10/3”

RESPONDENT: Jeffrey Kallberg (University of Pennsylvania)

Debussy (Waddington Room)

Jann Pasler (University of California, San Diego), Chair

Marie Rolf (Eastman School of Music): “The Emergence of the Symbolist Aesthetic in ‘En sourdine’”

Michael Notz (Eastman School of Music): “A Comparative Analysis of Versions of ‘Fantoche’”

Douglas Green (University of Texas, Austin): “‘Clair de lune’: An Analytical Study of Its Various Versions”

William J. Peterson (Pomona College): “Debussy in 1914: The Composing of *Six Epigraphes antiques*”

2:00–5:00—**SEM SESSIONS**

Improvisation and the Performer-Composer in Courts, Temples, and Brothels (Plaza Ballroom East)

J.H. Kwabena Nketia (University of Pittsburgh), Chair

Suzanne Meyers Sawa (University of Toronto): “Women Musicians in Medieval Arabo-Islamic Courts”

Joseph Lam (Harvard University): “Creativity Within Bounds (Imperial Sacrificial Songs in the Ming Dynasty, China)”

Margaret J. Kartomi (Monash University): “Erotic Malay Joget Dance Music in Riau (Sumatra)”

Peter Jeffrey (University of Delaware): “Ethnomusicological Issues in Research on Gregorian Chant”

Nguyen, Phong Th. (Kent State University): “Polyrhythm in Vietnamese Buddhist Chant of Praise: A Brief Analysis of Its Percussion Accompaniments”

Terry E. Miller (Kent State University): “The Survival of Archaic British Isles Hymnody in the Caribbean”

Peter Manuel (Brown University): “Thumri and the Decline of the Courtesans”

Musical Diversities: I (King George Room)

Mark Slobin (Wesleyan University), Chair

Geoffrey Miller (New York University): “Amateur Music Making in Antebellum America”

Key Kaufman Shelemay (New York University): “The Transmission and Performance of *Pizmonim* Among Syrian Jews in Brooklyn, New York”

J.E. Cunningham (San Diego State University): “Mandailing Music Traditions in Northern Sumatra”

Philip Yampolsky (University of Washington): “Codification of Improvisation in Central Javanese Gamelan Music”

Robert Witmer (York University): “Harmonic Families and Rhythmic Families in Popular Music: The Case of Reggae ‘Riddims’”

Milton L. Stewart (University of Washington): “Stylistic Environment and the Scar-Singing Styles of Ella Fitzgerald and Sarah Vaughn”

Round-Table Discussion: From Composer to Audience:

The Production of “Serious” Music in Canada

(Plaza Ballroom West)

Regula Qureshi (University of Alberta), Chair

Thursday

PARTICIPANTS: Michael Asch (University of Alberta); John Beckwith (University of Toronto); Alfred Fisher (University of Alberta); Alan Lessem (York University); Gilles Tremblay (Conservatoire de Montréal); Barry Trax (Simon Fraser University)

2:00 - 5:00 — SMT SESSIONS

History of Theory (Arbutus Room)

Jan Herlinger (Louisiana State University), Chair

Harold S. Powers (Princeton University): "Is Mode Real? The Arguments from Aaron"

Pamela Poulin (State University of New York, College at Cortland): "Niedt's 'Registerlein': An Early Eighteenth-Century Musical Dictionary"

Severine Neff (Barnard College, Columbia University): "Precursors of Atonal Theory: Bernhard Ziehn and Ernst Bacon"

Twentieth Century: I (Park Ballroom A)

Alan Chapman (Occidental College), Chair

Christopher Hasty (Yale University): "Problems of Temporal Succession and Linearity in Twentieth-Century Music"

James Benninghof (Baylor University): "Harmonic Focus as a Formal Device in Elliott Carter's *Symphony of Three Orchestras*"

Jonathan Bernard (Yale University): "Messiaen and Synaesthesia: The Correspondence between Color and Sound Structure in His Music"

Eighteenth-Century Keyboard Music (Joint Session, AMS/SMT) (Hotel Vancouver, Social Suite West)

Frederick Hammond (University of California, Los Angeles), Chair

Linton Powell (University of Texas, Arlington): "The Keyboard Music of Sebastian de Albero: An Astonishing Literature from the Orbit of Scarlatti"

Bruce Gustafson (Franklin and Marshall College): "Madame Brilllon and the Transition from Harpsichord to Piano in France"

Mark Lindley (Regensburg, W. Germany): "J.S. Bach's Tuning"

5:15 - 7:00 — All-Society Cocktail Reception, hosted by UBC Music Department and the Province of British Columbia (Great Hall of the Law Courts, Robson Square; entrance at Hornby and Nelson). Invitations distributed to registrants must be presented.

8:00 - 9:30 — SEM Current Issues Committee (Open Forum) (Plaza Ballroom East)

Robert Garfas (University of California, Irvine), Moderator

Stephen Blum (York University): "Ethnomusicologists vis-à-vis the Fallacies of Contemporary Musical Life"

8:30 — AMS 50 Campaign Committee Meeting (Tweedsmuir Room)

8:30 — Concert: Academy of Ancient Music Chamber Ensemble, C. Hogwood, Director; D. Thomas, Bass. Music by J.S. Bach, Handel, Vivaldi. (Orpheum Theatre, Smythe at Seymour)

9:00 — CMS Concert: Jazz, Classical, and Ethnic Music (Theatre, Robson Square Media Centre)

The Montana Consort (Montana State University)—James Campbell, Robert Curietta, Alan Leech, Karen Leech, Robi Johns, Glen Johnston

HOST: Christopher Wilkinson (West Virginia University)

9:30 - 11:30 — SEM Dance (Plaza Ballroom) (*All Societies Welcome*)

Music by Die Stadtpfeifer Fünfer; Elliot Weisgaber, clarinet; Heinrich Ohlemann, clarinet; Martin Berinbaum, trumpet; Ken Surges, trombone; Alan Thrasher, tuba

10:30 — AMS 1986 Program Committee Meeting (Chart Room)

Friday, 8 November

7:00 - 8:30 — CMS Council of Chief Executives of Regional Chapters (Turner Room) (*by invitation only*)

7:30 - 8:30 — SEM 1986 Program Committee Meeting (Dover Room)

7:30 - 8:30 — SEM Student Concerns (Open Meeting) (King George Room)

7:30 - 9:00 — Meeting of Four Societies' Presidents and 1985 Program Chairs (Four Seasons, Oak Room)

7:30 - 9:00 — SEM Chapter Coordinators Meeting (Cavendish Room)

8:00 — AMS Chapter Officers Breakfast Meeting (Garibaldi Room)

8:00 - 9:00 — SMT Committee of Review Meeting (Salon Montague)

8:30 - 10:00 — CMS SESSIONS

PANEL: The American Musician Abroad (Prince of Wales Room, 8:30 - 9:45)

MODERATOR: Kate Waring (Bonn, West Germany)

PARTICIPANTS: Carol Bailey Hughes (U.S.S.R., Italy, Southern Methodist University); Odaline de la Martinez (London, England); Michael J. Smith (Kivik, Sweden)

Teaching Music History (Plaza Ballroom East)

Louise Litterick (Mount Holyoke College), Chair

Linda M. Fidler and Richard S. James (Bowling Green State University): "Library User Education and the Undergraduate Music History Sequence"

Bonny Hough (Armstrong State University): "'Magazine Music' by Women Composers"

Isador Saslav (Peabody Conservatory of Music): "Latest Discoveries in the String Quarters of Joseph Haydn"

(Assisted by Davis Brooks, violin; Ann Woodward, viola; Douglas Moore, cello)

A New Partnership in Music Teacher Education: A Report of the National Task Force on Music Teacher Education (Grouse Room)

James C. Carlsen (University of Washington), Chair

Gerald B. Olson (University of Wisconsin), Presenter

RESPONDENTS: Carol Rogel Scott (Seattle Pacific University), Lawrence Starr (University of Washington), Roy Cummings (University of Washington)

9:00 - 12:00 — AMS PAPERS

Local Traditions in Medieval Monophony (Board Room)

Eugene Leahy (University of Notre Dame), Chair

David Hiley (Royal Holloway College, University of London): "English Antiphoners and Their Continental Relatives"

Michael L. Norton (Annandale, VA): "The Type II *Vistatio Sepulchri*"

Paul Merkley (University of Ottawa): "Conflicting Assignments in Italian Tonaries ca. 1000 - 1200"

Margot Fassler (Yale University): "The Sources for the Study of Music and Liturgy in Medieval Chartres"

Chanson and Madrigal (Pacific Ballroom)

Jessie Ann Owens (Brandeis University), Chair

Christopher Reynolds (McGill University): "*The meisme chose*."

Josquin's Elaboration of Lemaire's *rhétoriqueur* Concerts in *Plus nulz regetz*"

Martha Feldman (University of Pennsylvania): "Music as Rhetoric in the Madrigals of Willaert's *Musica Nova*"

Friday

- James Haar (University of North Carolina, Chapel Hill): "The Later Madrigals of Arcadelt"
- H. Colin Slim (University of California, Irvine): "Arcadelt's First Love in an Anonymous Allegorical Painting"
- Eighteenth-Century Opera** (Social Suite West)
- Gordana Lazarevich (University of Victoria), Chair
- Jean E. Graham (Harvard University): "Handel and Metastasio"
- Marita P. McClymonds (University of Virginia): "Verzari's Controversial Operatic Innovations and Their Influence on Italian Opera Seria in the Late Eighteenth Century"
- M. Elizabeth C. Bartlet (Duke University): "Marie-Antoinette and Grétry: The Court Version of *La rosière de Salency* as Compliment for the Dauphine"
- Thomas Bauman (Stanford University): "Mozart and the Role of the Romanze in German Opera"
- C.P.E. Bach and Mid-Eighteenth-Century Style** (Wadlington Room)

- Eugene Helm (University of Maryland, College Park), Chair
- Michelle Fillion (Mills College): "C.P.E. Bach and the Trio Old and New"
- Darrell M. Berg (St. Louis Conservatory of Music): " 'Revision' in C.P.E. Bach's Keyboard Sonatas"
- Howard Serwer (University of Maryland, College Park): "C.P.E. Bach, J.C.H. Reilstab, and the Sonatas with Varied Reprises"
- Bertil H. van Boer, Jr. (Brigham Young University): "*Sturm und Drang*: A Reappraisal of Its Musical and Literary Roots"
- Wagner and His Influence** (Vancouver Island Room)
- John Deathridge (King's College, Cambridge), Chair
- Martha Calhoun (State University of New York, Stony Brook): "Wagner's Beethoven in France: The Translation of an Aesthetic"
- Adelyn Peck (Princeton University): "The Kleinmeister's Ring: The Influence of Liszt and Wagner on Heinrich Dorn's *Die Nibelungen*"
- Carolyn Abbate (Princeton University): "Wagner's 'Über Modulation' and *Tristan* as 'Opera as Symphony'"
- Robert Bailey (Eastman School of Music): "Tonal Language and Formal Models in Mahler's Fourth Symphony"

9:00 – 12:00 — SEM SESSIONS

- Music Values and the Study of Music** (Cypress Room)
- Ellen Koskoff (Eastman School of Music), Chair
- PRINCIPAL PAPER: Robert Cogan (New England Conservatory)
- RESPONDENT: Ricardo Trínillos (University of Hawaii); other respondents to be announced
- The Perception of Music** (King George Room)
- Dane Harwood, Chair
- Norman Stanfield (Vancouver, B.C.): "Two Perceptions of Music Compared: The Meian and Kinko Schools of Sacred Solo Shakuhachi Music"
- Scott L. Marcus (University of California, Los Angeles): "You Can't Get There From Here: The Interrelationship of the Arab *maqamat*"
- Giovanni Giuntati (University of Maryland, Baltimore County): "Basic Research on the SEMPPOD: A Sonic Study of Double Reeds"
- Pauline Haslbacher (York University): " 'We Living in Jail': The Dual Function of Pan Mas' in Caribana 85"
- Craig Woodson (Venice, CA): "Perception of Music in the Global Context: On the Feasibility of Introducing a World Music Ensemble into Schools"
- Hewitt Pantalone (State University of New York, College at Oneonta): "Dakota Songs and Western Ears: A Desk Study of Rhythmic Perception"

Friday

- Panel Discussion: Ethnomusicological Approaches to Western Art Music** (Plaza Ballroom West)
- Stephen Blum (York University): "Charles Ives and American Ethnomusicology"
- John Rahn (University of Washington): "Ethnomusicological Approaches to Western Art Music: A Native Reflection"
- Barbara Reeder Lundquist (University of Washington): "Ethnomusicology and Western Art Music: Paradoxes and Problems"
- Philip V. Bohلمان (University of Pittsburgh): "Of *Yekes* and Chamber Music: The Ethnic Boundaries of Western Art Music in Israel"
- Malena Kuss (North Texas State University): "Traditional Elements in Nineteenth- and Twentieth-Century Operas from Latin America and the Caribbean"
- Daniel M. Neuman (University of Washington) and Bruno Nettl (University of Illinois): "Now and Then, Here and There: Two Case Studies and Four Approaches"

9:00 – 12:00 — SMT SESSIONS

- Pedagogy** (Park Ballroom C)
- John White (University of Florida), Chair
- Charles Lord and Allen Goodwin (University of Kentucky): "Sight-singing at the Computer: An Important Step Forward"
- Paul Dworak (North Texas State University): "A Representation that Facilitates the Computer Notation of Keyboard and Sight-singing Performance"
- Robert Gaudin (Eastman School of Music): "A Pedagogical Approach to Chromaticism in Sixteenth- and Eighteenth-Century Counterpoint," read by Robert Morris
- Cognition and Perception** (Arbutus Room)
- David Butler (Ohio State University), Chair
- Helen Brown (Columbus, OH): "Tonal Hierarchies and Perceptual Context: An Experimental Study of Musical Behavior"
- Diana Deutsch (University of California, San Diego): "Nontransferable Music?"
- J. Timothy Kolosick (University of Arizona): "A Computer Representation of Pitch Relationships: Toward a Music Expert System"

Classical Period

- (Park Ballroom A)
- Janet M. Levy (New York, NY), Chair
- John Hamaker (University of Iowa): "*Tutti* as a Timbre Referent in the Classical Symphony"
- Edwin Hantz (Eastman School of Music): "Haydn's Keyboard Rondos: Problems in Structural Coherence"
- Robert Gjerdingen (Carleton College): "The Formation and Deformation of Classic/Romantic Phrase Schemata: A Theoretical Model and Historical Study"

10:00 – 10:45 — CMS CONCERTS

- 10:00 – 10:45 — CMS Concert: Works of CMS Composers** (Theatre, Robson Square Media Centre) *Lontano*, Odaline de la Martinez, Music Director; music by Nazik Cynthia Cozette, Bun-Ching Lam, Eric Valiunsky, Anthony Payne
- HOST: Elliott S. Schwartz (Bowdoin College)
-
- 10:15 – 11:45 — CMS SESSIONS**
- Nineteenth- and Twentieth-Century Studies** (Grouse Room)
- Larry Todd (Duke University), Chair
- Elaine Brody (New York University): "The Legacy of Ida Rubinstein (1885 – 1960): Mata Hari of the Ballets Russes"
- S. Timothy Maloney (Stetson University): "Canadian Wind Ensemble Literature"
- Lawrence Starr (University of Washington): "Yes, Geršwin, and Copland: Reflections on the Strange History of American Art Music"

Friday

Analytical Topics (Plaza Ballroom East)

- Edward Chudacoff (University of Michigan), Chair
 Donald Chittum (Philadelphia College of the Performing Arts):
 "Szarvinsky's Cubist Orchestration"
 Mary Bante Knight (Lewis University): "Beethoven's Early
 Symphonic Scherzo: In Search of the New Minuet"
 Leo Kraft (City University of New York, Queens College): "Three
 Octatonic Pieces from Bartók's *Mikrokosmos*"

11:00–11:45 — CMS Concert: (Theatre, Robson Square Media Centre) *Lontana*, Odaline de la Martinez, Music Director, music by Ann Hankinson, David Lipak, Douglas Owens, Roberto Gerhard
 Host: Elliott S. Schwartz (Bowdoin College)

12:00–1:00 — AMS Committee on the Status of Women:
Open Forum, Marcia J. Citron (Rice University), Chair
 (Social Suite East)

12:00 — JAMS Editorial Board Luncheon Meeting
 (Garibaldi Room)

12:00–1:00 — AMS Concert: The Keyboard Music of
 Johann Gottfried Mithel (1728–1788) and Johann
 Gottfried Eckard (1735–1809), Preechi de Silva, Fortepiano
 (Vancouver Island Room)

12:15–1:00 — SEM/CMS Concert: Hebrew and Yiddish
 Songs, Claire Klein Osipov, Singer, Wendy Bross Smart,
 Accompanist (Theatre, Robson Square Media Centre)

12:00–1:30 — AMS Lecture-Recital: Beethoven's "Diabelli"
 Variations, Op. 120, William Kinderman, Piano
 (Social Suite West)

12:00–2:00 — SEM Council Meeting (Turner Room)

**12:00–2:00 — AMS Panel Discussion: Publishing on Music
 and Musicology** (Waddington Room)

Susan Sommer (New York Public Library, Lincoln Center), Chair
 Claire Brook (W.W. Norton & Co.), Leo Balk (Garland Publishing
 Inc.), Bruce Phillips (Oxford University Press), Participants

12:00–2:00 — SMT Executive Board Meeting (Oak Room)

12:30–2:00 — CMS SESSIONS

A Century of Musicology (Grouse Room)

- Leonard Meyer (University of Pennsylvania), Chair
 Alexander Ringet (University of Illinois): "Musicology—Scholarly
 and Academic: Some Centennial Reflections"
 William Poland (Ohio State University): "A Theorist's Review of a
 Century of Musicology"
 RESPONDENT: Joseph Kerman (University of California,
 Berkeley)

Developing Basic Academic Skills in General Education Courses (Plaza Ballroom East)

- Donald J. Funes (Northern Illinois University), Chair
 Robert Greenlee (Bowdoin College), Margaret Rose (University of
 California, San Diego), Presenters

1:00–2:00 — AMS Graduate Students' Meeting,
 (Tweedsmuir Room)

Ruth Solie (Smith College), Chair

1:00–2:00 — AMS Concert: The Keyboard Music of
 Sebastián de Albero (1722–1756), Linton Powell,
 Harpsichord (Vancouver Island Room)

1:00–2:00 — SEM Archiving Committee Meeting (Dover
 Room)

Friday

**1:15–2:00 — CMS Concert: Contemporary American
 Music**, Adam Wodnicki (North Texas State University), Piano
 (Theatre, Robson Square Media Centre)
 Works by Aaron Copland, Thomas Clark, Larry Austin, George
 Perle

2:15–5:15 — AMS/CMS/SEM/SMT Plenary Session
 (Hotel Vancouver, Pacific Ballroom)

Fact and Value in Contemporary Musical Scholarship

- Bruno Nettl (University of Illinois), Chair
 PRINCIPAL SPEAKERS: Margaret Bent (Princeton University),
 AMS; Wallace Berry (University of British Columbia), SMT;
 Phillip Rhodes (Carleton College), CMS; Carol Robertson
 (University of Maryland), SEM
 RESPONDENTS: Anne C. Hall (Wilfrid Laurier University),
 SMT; Leo Treitler (State University of New York, Stony Brook),
 AMS; Bonnie Wade (University of California, Berkeley), SEM;
 Robert J. Werner (University of Cincinnati), CMS

**6:00–7:30 — AMS No-Host Cocktail Reception (All
 Societies Welcome)** (Hotel Vancouver, Pacific Ballroom)

6:30–8:00 — SEM Body Meets the Board (Grouse Room)

**7:30–9:00 — SMT Informal Session: Making a Place for
 Women**, Judy Lochhead (State University of New York, Stony
 Brook), Coordinator (Aspen Room)

**8:30 — SEM/CMS Concert: Euro-Canadian Folk Music,
 Vancouver Folk Song Society and The Suffering Gaels**
 (Cinema, Robson Square Media Centre) (Informal music and
 cash bar following the concert, Cinema Lobby)

8:30 — AMS 50 Fellowship Committee Meeting (Garibaldi
 Room)

**8:30 — Concert: Bach and Handel: Youthful Rarities,
 Cantata Singers and CBC Vancouver Orchestra** (Orpheum
 Theatre, Smythe at Seymour)

Saturday, 9 November

7:30—AMS Publications Committee Breakfast Meeting
(Tweedmuir Room)

7:30—AMS 1985 and 1986 Local Arrangements Committees Breakfast Meeting (Chart Room)

7:30-9:00—SEM Education Committee Meeting
(Dover Room)

8:30-10:00—SEM Editorial Board Meeting
(Tennyson Room)

8:30-10:00—CMS SESSIONS

American Studies (Plaza Ballroom East)

Richard Wang (University of Illinois, Chicago), Chair

Craig B. Parker (Kansas State University): "Herbert L. Clarke and *The Bride of the Waves*"

Nancy R. Ping-Robbins (Shaw University): "The Music and Early Career of Gustave Blessner in America"

William John Summers (Dartmouth College): "New and Little-Known Sources of Eighteenth- and Nineteenth-Century Music from Hispanic California"

Music and Cognition: I (Grouse Room)

James C. Carlsen (University of Washington), Chair

Helen Brown (Columbus, OH): "Temporal Considerations in Perceptual Models of Tonality"

Richmond Browne (University of Michigan): "The Perils of Polling: What Do the Responses Mean?"

David Butler (Ohio State University): "Tonality as a Perceptual Transaction"

CMS/SEM Special Session: Music in the Life of Man,

Barry S. Brook (City University of New York, Graduate Center), Chair (Prince of Wales Room)

PARTICIPANTS: Members, MLM Board of Directors; Malena Kuss (North Texas State University); William Austin (Cornell University); Charlotte Heth (University of California, Los Angeles); Ramon Pelinsky (Université de Montréal); William John Summers (Dartmouth College)

9:00-12:00—AMS PAPERS

Liturgical Chant: *Traditio et Interpretatio* (Social Suite West)

Ruth Steiner (Catholic University), Chair

James W. McKinnon (State University of New York, Buffalo):

"The Fourth-Century Origin of the Gradual"

RESPONDENT: Peter Jeffery (University of Delaware)

John G. Johnstone (Columbus, OH): "In Search of a Musical Grammar: Musical Inflection at St. Gall"

RESPONDENT: Edward Nowacki (Brandeis University)

Joseph A. Diamond (Ohio State University): "Reconstruction Reconsidered: The Nature of Variance in Local Traditions of Tropes"

David G. Hughes (Harvard University): "Evidence for the Traditional View of the History of Gregorian Chant"

RESPONDENT: Lawrence A. Gushue (University of Illinois)

Local Traditions in Renaissance Polyphony

(Vancouver Island Room)

Marie-Louise Göllner (University of California, Los Angeles), Chair

Jennifer Bloxam (Yale University): "The Influence of Local Liturgical Tradition on Polyphony: The *Missa Fiorini egregius* by Pipelare and La Rue"

Jeremy Noble (State University of New York, Buffalo): "The Genealogies of Christ and Their Musical Settings"

Lynn Elise Halpern (University of Illinois, Urbana-Champaign): "The Milanese Motet Cycles: A Reappraisal"

Saturday

Reinhard Strohm (Yale University): "Polyphonic Music in Fifteenth-Century Austria"

Barbara Haggin (University of Illinois): "A New Composition by Guillaume Du Fay" (a brief announcement)

Baroque Music and Rhetoric (Waddington Room)

George Buelow (Indiana University), Chair

Paul Walker (State University of New York, Buffalo): "From Renaissance *Fuga* to Baroque Fugue: The Role of the 'Sweetlinck Theory Manuscripts'"

Robert Strizich (Wellesley College): "Styles of Thorough-Bass Accompaniment on Baroque Guitar"

Dietrich Bartel (Canadian Mennonite Bible College): "The Concept of the Musical-Rhetorical Figures: A Study in Terminology and the Evolution of Musical Thought"

David Schulenberg (Delmar, NY): "Musical Expression and Musical Rhetoric in the Harpsichord Works of J.S. Bach"

Nineteenth-Century Opera (Pacific Ballroom)

Philip Gossett (University of Chicago), Chair

Richard L. Wilson (University of Southern California): "The Aesthetics of E.T.A. Hoffmann as Reflected in His Opera *Undine*"

David M. Kilroy (Harvard University): "Oberon vs. *Oberon*"

Warren Darcy (Oberlin Conservatory of Music): "Hagen's Rallying Cry—A Study in Non-Functional Harmony"

Russian Music (Board Room)

Richard Taruskin (Columbia University), Chair

Claudia R. Jensen (Princeton University): "An Early Circle of Fifths: Nikolai Diletskii's *Grammatika muslikskogo pentia* (A Grammar of Musical Song)"

Carol Bailey Hughes (Southern Methodist University): "*Minin i Pozharskii*: The First Russian Patriotic Oratorio (1811)"

Gordon D. McQuere (Baylor University): "The Development of Music Theory in Russia: Sergei Taneev"

Margarita Mazo (Ohio State University): "Russian Wedding Ritual in Folk Tradition and Stravinsky's *Les noces*"

SEM SESSIONS

9:00-10:00—Bi-Musicality and Musicianship

(King George Room)

Paul Berliner (Northwestern University), Chair

James K. Leger (University of Texas, Austin): "Bilingualism, Biculturalism, and Bi-musicality: Musical Communication Within a Multi-Ethnic Setting"

Sandra Smith (Arizona State University): "Kuna Multi-musicality: A Form of Pre-Columbian Musicianship?"

9:00-12:00—Culture-Specific Theoretical Systems
(Cypress Room)

Daniel M. Neuman (University of Washington), Chair

PRINCIPAL PAPER: Harold S. Powers (Princeton University)
RESPONDENTS: Ruth Solie (Smith College), AMS, Ter Ellingson (University of Washington), SEM; Lewis Rowell (Indiana University), SMT

9:00-12:00—Dance as a Determinant of Music
(Plaza Ballroom West)

Judy Mitoma (University of California, Los Angeles), Chair

Carol M. Bahraeki (University of Illinois): "The Interaction of Dance and Song in Nagpuri Music"

Selwyn Ahyoung (Florida State University): "Jump-up, Las' Lap, Fête, and the Soca Fever: Dance as a Musico-Cultural Determinant in the Trinidad Carnival"

Hazel Chung (Baltimore, MD): "The Bariis Dancer: Conductor of the Balinese Gamelan"

Saturday

Janet Susan Reineck (University of California, Berkeley): "Dance as a Determinant of Music Among the Albanians of Kosovo, Yugoslavia"

Anne Dhu Shapiro (Harvard University): "The Mescalero Apache Girls' Puberty Ceremony: A Consideration of the Role of Music in Structuring Ritual Time and Transformation"

9:00 - 12:00 — SMT SESSIONS

Twentieth Century: II (Arbutus Room)

Richard Swift (University of California, Davis), Chair

David Mancini (Southern Methodist University): "Twelve-Tone

Polarity in the Late Works of Luigi Dallapiccola"

Joseph Dubiel (Princeton University): "The Animation of Lists in the Music of Milton Babbitt"

Andrew Mead (University of Michigan): "Pitch Strategies in the Music of Elliott Carter"

Time and Rhythm (Park Ballroom A)

Peter Westergaard (Princeton University), Chair

Leslie David Blasius (Princeton, NJ): "Thoughts on Performance as Analysis"

Joel Lester (City University of New York, City College and Graduate Center): "Accent in Tonal Music"

Peter Breslauer (University of Notre Dame): "Diminutional Rhythm and Motive in the Music of Bach and Brahms"

10:15 - 11:45 — CMS SESSION (Plaza Ballroom East)

CMS Plenary Session: The Release from Tension and Anxiety Applied to Teaching, Karó Havas (Oxford, England)

James C. Carlsen (University of Washington), Chair

10:30 - 12:00 — SEM SESSION

Native Canadian Traditions (King George Room)

Robert Witmer (York University), Chair

Beverly A. Cavanagh (Queen's University): "Algonkian Indian Hymnody: Conflicts in Valuation as Determinants of a Tradition"

Anton Kolstee (Vancouver, B.C.): "Musical Style and Ritual Structure in Central Northwest Coast Indian Winter Ceremonies"

Wendy Bros Stuart (Vancouver, B.C.): "North Haida Indian Music: A Salvage Project"

12:00 - 1:00 — AMS Council Meeting (Social Suite East)

12:00 - 1:00 — AMS Concert: Keyboard Sonatas by Kalkbrenner, Bruno Biot, Piano (Social Suite West)

12:00 - 1:30 — AMS Concert: Sonatas by Domenico Scarlatti, Eiji Hashimoto, Harpsichord (Vancouver Island Room)

12:00 - 1:30 — CMS SESSIONS

Nineteenth-Century Studies — Professional Musicians:

Women Performers in the Nineteenth Century (Grouse Room)

Nancy Reich (Hastings-On-Hudson, NY), Chair

RESPONDENT: Susan Erickson (Conservatorium of Music, Sydney, Australia)

Adrienne Fried Block (City University of New York): "Four Visiting Virtuosas and Their Impact on Boston's Musical Life, 1850 - 1900"

Karin Pendle (University of Cincinnati): "A Night at the Opera: Women Performers in Paris, 1830 - 1850"

Marilyn J. Smiley (State University of New York, College at Oswego): "Touring Artists and Local Performers: A Microcosm of Nineteenth-Century American Musical Life"

Saturday

Current Theory Research (Plaza Ballroom East)

James M. Baker (Brown University), Chair

Judith Shain Allen (University of Virginia): "Minimal Music: Transition as Exposition"

Richard S. Parks (Southern Methodist University): "Music Analysis as a Practical Aid for the Performer"

John Reble (College for the Recording Arts, San Francisco): "The 1913 Schenker Erläuterungsausgabe of Op. 109 by Beethoven"

12:30 - 2:00 — SEM/CMS Dim Sum Luncheon and

Concert of Cantonese Music, Ngai Lum Ensemble (by reservation only) (Kingsland Restaurant)

12:30 - 2:00 — AMS Concert: A Motivic Interpretation of Bach's *Die Kunst der Fuge*, Adel Heinrich, Organ (Christ Church Cathedral)

1:00 - 2:00 — AMS Concert: American Parlor Songs, University of Washington Collegium Musicum; JoAnn Taricani, Director (Social Suite West)

1:00 - 2:00 — AMS Open Forum: Gay and Lesbian Perspectives in Musicology, Philip Brett (University of California, Berkeley), Chair (Social Suite East)

1:00 - 2:00 — AMS Committee on the Status of Women Meeting (Chart Room)

1:00 - 2:15 — SMT Keynote Address (Park Ballroom A)

Arnold Whittall (King's College, University of London): "The Theorist's Sense of History: Concepts of Contemporaneity in Composition and Analysis"

Introduced by William Benjamin (University of British Columbia)

1:45 - 2:15 — CMS Concert: Sonata, Op. 34, for violin and piano by Amy Marcy Cheney Beach, Davis Brooks (Bucknell University), Violin; Lois Svard (Bucknell University), Piano (Theatre, Robson Square Media Centre)
HOST: Anne Mayer (Carleton College)

CMS SESSIONS

1:45 - 2:55 — Danish Music (Plaza Ballroom East)

Eugene Leahy (University of Notre Dame), Chair

Mina Miller (University of Kentucky): "The Piano Music of Carl Nielsen"

William H. Reynolds (University of California, Riverside) and Poul Rosenbaum (Copenhagen, Denmark): "Danish Music from 1950 to the Present"

1:45 - 3:15 — New Courses in the General Education Area (Grouse Room)

Christopher Wilkinson (West Virginia University), Chair

S. Kay Hoke (Butler University), Anthony T. Rauche (University of Hartford), David Willoughby (Eastern New Mexico University), Participants

2:00 - 5:00 — AMS PAPERS

Medieval Polyphony (Board Room)

Andrew Hughes (University of Toronto), Chair

Jean Widaman (Brandeis University): "Missa Verbum Incarnatum by Arnold de Lantins: A Study of Transmission in Early Fifteenth-Century Sources"

Virginia Newes (Brandeis University): "Chac, Caccia, Fuga: The Convergence of French and Italian Traditions"

Mary E. Wolinski (Brandeis University): "The Transmission of Tenors in Thirteenth-Century French Motets"

Ernest H. Sanders (Columbia University): "Conductus and Modal Rhythm"

Saturday

Festivals and Philosophers (Vancouver Island Room)

- Maria Rika Maniates (University of Toronto), Chair
 Cyrilla Barr (Catholic University): "Medici Patronage of Music and Spectacle in Quattrocento Florence: An Entertainment for the Duke of Milan in 1471"
 Robert M. Lindell (Austrian Academy of Sciences): "Music at Imperial Court Festivals 1550–1600"
 Clara Marvin (Yale University): "Pietro Pontio on Style and Musical Criticism"
 Gary Tomlinson (University of Pennsylvania): "Ficino's Musical Magic in the Sixteenth Century"

Bach (Pacific Ballroom)

- Christoph Wolff (Harvard University), Chair
 Gregory G. Butler (University of British Columbia): "The Engraving and Printing of J.S. Bach's Six Partitas"
 Robert Marshall (Brandeis University): "Organ or 'Klavier'? Instrumental Prescriptions in the Early Sources of Bach's Keyboard Music"
 Werner Breig (Universität Wuppertal, W. Germany): "On the Development of Bach's Four-Part Chorales" (Professor Breig's participation has been made possible through the assistance of the Goethe-Institute of Vancouver.)

Nineteenth-Century Symphonic Music (Social Suite West)

- D. Kern Holoman (University of California, Davis), Chair
 Robert G. Hopkins (Hamilton College): "When a Coda Is More Than a Coda: Reflections on Beethoven's Eighth Symphony Finale and Other Works"
 Jon W. Finson (University of North Carolina, Chapel Hill): "The Sketches for the Fourth Movement of Schumann's Second Symphony, Op. 61"
 Dolores Pesce (Washington University, St. Louis): "New Light on the Programmatic Aesthetic of MacDowell's Symphonic Poems"
 Thomas S. Grey (University of California, Berkeley): "Wagner and the Overture: An Essay in the Aesthetics of Musical Form"

Twentieth-Century Topics (Waddington Room)

- Mark DeVoto (Tufts University), Chair
 Judy Lochhead (State University of New York, Stony Brook): "The Character of Lulu: A Misunderstanding"
 Robert W. Wason (Eastman School of Music): "Tonality and Atonality in Frederic Rzewski's *Variations on 'The People United Will Never Be Defeated!'*"
 Austin Clarkson (York University): "Spatial Proportions, Pitch Complexes, and Organic Modes in the Later Music of Stefan Wolpe (1902–1972)"

2:30–3:00 — CMS Concert: Piano Music by George Perle:

A Seventieth-Birthday Concert, Michael Bortskin, Piano
 (Theatre, Robson Square Media Centre)
 Host: Frank Weinstock (University of Cincinnati)

2:30–3:30 — SEM Charles Seeger Memorial Lecture

(Plaza Ballroom Centre and West)
 Barbara Krader, "Slavic Folk Music: Forms of Singing and Self-Identity"

2:30–4:30 — SMT SESSIONS

Metaphors in Analysis (Arbutus Room)

Marion Guck (Temple University), Chair
 Lewis Rowell (Indiana University): "The Logic of Musical Beginnings"

Judy Lochhead (State University of New York, Stony Brook): "The Metaphor of Musical Motion: Is There an Alternative?"

Saturday

Romantic Period (Park Ballroom A)

- Sherman van Solkema (City University of New York, Brooklyn College and Graduate Center), Chair
 Robert Morgan (University of Chicago): "Evolutionary Form in Chopin's F Minor Piano Fantasia"
 Howard Cinnamon (Hofstra University): "Tonic Appoggiation and Successive Equal Third Relations as Elements of Tonal Evolution in the Music of Franz Liszt"

CMS SESSIONS

3:00–4:00 — Afro-American Music (Plaza Ballroom East)

Samuel A. Floyd (Center for Black Music Research), Chair
 Lee Cloud (Northern Illinois University): "Hidden Meaning in Afro-American Children's Playsongs"
 Willis Patterson (University of Michigan): "Black American Art Songs"

3:30–5:00 — Music and Cognition: II (Grouse Room)

Richmond Browne (University of Michigan), Chair
 Frank B. Christopherson (University of Washington): "Tonality and the Dynamics of Melody: Tonal Comprehension and Expectation"
 Bernice Laden (University of Washington): "The Effect of Rhythm upon the Perception of Tonality"
 Bernard Rose (Odessa College): "The Effect of Rhythm on Melodic Expectancy"

3:45–5:45 — SEM Business Meeting (Plaza Ballroom Centre and West)

4:15–5:15 — CMS Panel: The Canadian Musician, Timothy J. McGee (University of Toronto), Moderator
 (Plaza Ballroom East)

PARTICIPANTS: John Beckwith (Institute for Canadian Music), David Keane (Queens University), Phyllis Marling and Colin Miles (Canadian Music Centre)

5:00–6:00 — SMT Business Meeting (Garbaldi Room)

5:15–6:30 — AMS Business Meeting (Pacific Ballroom)

5:30–6:15 — CMS General Session (Plaza Ballroom East)

Report of the President
 Reports of the National Officers
 Report of the Executive Director
 Reports of the Chief Executives of Regional Chapters
 Reports of the Committee Chairmen

6:00–7:00 — SEM 1986 Program Committee Meeting (Cavendish Room)

7:30–8:30 — AMS Concert: French Music of the Early 19th Century — Works of Le Sueur, Onslow, and Berlioz (*Clairié nouvelle* Theremin, discovered 1983), University of California (Davis) Symphony, D. Kern Holoman, Conductor; University Singers and Choral Union, University of British Columbia, James Fankhauser and James Schell, Conductors (Four Seasons, Park Ballroom)

7:30–9:00 — SMT Round Table Forum: New Directions in Theoretical Research, Alexandra Pierce (University of Redlands), Coordinator (Salon Montague)

8:00–9:30 — SEM/CMS Concert: Kwakwaka'waka Music and Dance

— Northwest Coast *Poldatch*, Hunt Family-Fort Rupert Singers (Cinema, Robson Square Media Centre) (Smoked salmon dinner, Cinema Lobby, 6:30–8:00)

8:30 — Concert: Vancouver Symphony Orchestra, Rudolf Barshai, Conductor; Alexis Weissenberg, Piano (Orpheum Theatre, Smythe at Seymour)

9:30 — AMS/SMT Ball (All Societies Welcome)

(Four Seasons, Park Ballroom)
 9:30–10:15 — **Waltzes, polkas, and quadrilles**, UCD Symphony, D. Kern Holoman, Conductor
 10:30 — **The Tom Keenlyside Band**

Sunday, 10 November

7:00–8:30—CMS Continental Breakfast (All members of The College Music Society are invited to attend.)
(Seymour Room)

7:30—SMT Joint Meeting of 1985 and 1986 Program Committees (Oak Room)

7:30–8:30—SEM Council Meeting (Turner Room)

8:00—AMS Board Meeting (Chart Room)

8:30–10:00—CMS SESSIONS

Medieval and Renaissance Studies (Plaza Ballroom East)

Jeremy Noble (State University of New York, Buffalo), Chair

Donald Colton (University of Evansville): "Other Facets of Heinrich Glarean."

Jan Herlinger (Louisiana State University): "What 'Recentro Music Theory' Tells Us"

Daniel Taddie (Bethel College): "The Emergence of Scala as a Musical Term ca. 1500"

Music and Cognition: III (Grouse Room)

Carol Rogel Scott (Seattle Pacific University), Chair

Sang-Hie Lee (University of Alabama): "Biomechanics in Piano Performance"

Julia Schnebly-Black (University of Washington): "Effects of Labels on Cognitive Processing in Early Learning: Comparison of Mod 12 and Diatonic Terminology"

Martlene Thal (University of Oregon): "Overcoming Performance Anxiety"

Composition

 (Plaza Ballroom West)

Michael Schelle (Butler University), Chair

Marshall Bialosky (California State University, Dominguez Hills): "The American Composer as Author"

Michael K. Daugherty (Princeton, New Jersey): "New Techniques in Composing Computer Music: Using Home Computers, Synthesizers, and Music Software"

Lothar Klein (University of Toronto): "Music of the Past for the Future: The Historical Collage"

8:30–4:00—SEM Executive Board Meeting

 (Cavendish Room)

9:00–10:30—SEM SESSIONS

Analysis from Sound Recordings (Cypress Room)

Chair: to be announced

PRINCIPAL PAPER: Richard Crawford (University of Michigan)
RESPONDENT: Regula Qureshi (University of Alberta), SEM

Panel Discussion: Pathways to Musical Experience (Prince of Wales Room)

Ruth M. Stone (Indiana University): "From Ethnomusicology I"

Mellonce Burmim (Indiana University): "From Ethnomusicology II"

Jane Fulcher (Indiana University): "From Musicology"

Marianne Kjelian-Gilbert (Indiana University): "From Music Theory"

DISCUSSANTS: Christopher Hasty (Yale University); Ellen Koskoff (Eastman School of Music); Robert P. Morgan (University of Chicago)

9:00–12:00—AMS PAPERS

Renaissance Musical Institutions and Patrons (Social Suite West)

Edmond Strainchamps (State University of New York, Buffalo), Chair

Barbara H. Haggth (University of Illinois, Urbana-Champaign): "Music, Religion, and Royalty in Fifteenth-Century Brussels"

Sunday

Richard Sherr (Smith College): "Some Remarks on Papal Patronage, Singers, and Music in the Papal Chapel in the Early Sixteenth Century"

Giulio M. Ongaro (University of North Carolina, Chapel Hill): "The Chapel of St. Mark's at the Time of Adrian Willaert (1527–1562)"

Rudolf Rasmh (University of Utrecht, The Netherlands): "Musical Life at Antwerp Cathedral Around 1600"

Handel (Pacific Ballroom)

J. Merrill Knapp (Princeton University), Chair

Graydon Beeks (Pomona College): "A Question of Style or a Matter of Convenience: The Place of the Chandos Anthems in Handel's *Ossire?*"

Lowell Lindgren (Massachusetts Institute of Technology): "The Saging of Handel's Operas in London"

Howard E. Smither (University of North Carolina, Chapel Hill): "Handelian Influence on the Aesthetic of German Oratorio in the Early Nineteenth Century"

Winton Dean (Godalming, England): "Recent Trends in Handel Research" (Mr. Dean's participation has been made possible through the assistance of The British Council.)

Haydn and Beethoven (Vancouver Island Room)

Karl Geiringer (University of California, Santa Barbara), Chair
bruce d. meclung (Eastman School of Music): "Joseph Haydn's *Flötenlied*, Hob. XIX: A Study in Ornamentation"

Hollace A. Schafer (Brandeis University): "A New Approach to the Categorization of Joseph Haydn's Sketches"

Bruce B. Campbell (Michigan State University): "The *Presto* of Beethoven's Opus 59, No. 2: The Counterpoint of Compositional Design"

Robert Winter (University of California, Los Angeles): "The Bifocal Close and the Evolution of the High Classical Style"

Brahms (Board Room)

Margit L. McCorkle (Vancouver, B.C.), Chair

David Brodbeck (University of Southern California): "Compatibility, Coherence and Closure in Brahms's *Liebsterlied* Wälzer"

Robert T. Laudon (University of Minnesota): "The Debate about Consecutive Fifths: A Context for Brahms's Manuscript 'Okarven und Quinten'"

Camilla Cai (Boston University): "Brahms's Revisions to His Late, Short Piano Pieces"

Kenneth Hull (Princeton University and Conrad Grebel College, University of Waterloo): "Quotation, Allusion, and Model in Brahms's Fourth Symphony"

American Popular Music and Jazz (Waddington Room)

Anne Dhu Shapiro (Harvard University), Chair

Chris Goertzen (St. Louis Conservatory of Music): "Mrs. Joe Person's *Popular Airs*: Early Black-Face Minstrel Tunes in Oral Tradition"

Donald Johns (University of California, Riverside): "Unconventional Alternatives in the Tonal Conceptions of American Popular Music, ca. 1921–1980"

Jane Bowers (University of Wisconsin, Milwaukee): "Blues Singer Estella ('Mama') Yancey"

Lawrence Gushue (University of Illinois, Urbana-Champaign): "Recalibrating the Early Chronology of New Orleans Jazz"

9:00–12:00—SEM SESSION

Musical Diversities: II (King George Room)

Timothy F. Rice (University of Toronto), Chair

Sunday

- Jennifer C. Post (Middlebury College): "Erasing the Boundaries Between Public and Private Music: Twentieth-Century Changes in Women's Music"
 Pirko Moisala (Helsinki, Finland): "The Change of Gungung Music Culture, 1975–1985 (Nepal)"
 Lynne Jessup (San Diego State University): "Presenting Research to Music Teachers: What and How"
 Lester P. Mounts (University of California, Santa Barbara): "The Roles of Vai Women in the Production of Music"
 Claire Pejin (Rutgers University): "Improvisation and the Welsh Penillion: Origins in the Ap Huw MS?"
 Kathleen R. Oien (University of Washington): "Music in the Structuring of Australian Aboriginal Adaptations"

9:00–12:00 — SMT SESSIONS

Text and Music (Arbutus Room)

Arthur Wenk (Université Laval), Chair

- Taylor Greer (Yale University): "L'Heure Exquise: Fauré's Use of the Whole-Tone Scale in *La Bonne Chanson*"
 Marie Rolf (Eastman School of Music): "Structural Coherence in Act IV, Scene 4 of Debussy's *Pelléas et Mélisande*"
 Richard Parks (Southern Methodist University): "Text Expression Through the Use of Pitch Materials in Debussy's *Pelléas et Mélisande*"

Berg and Schoenberg (Garibaldi Room)

Martha Hyde (Yale University), Chair

- Dave Headlam (Eastman School of Music): "The Musical Relevance of the Derivation of Sets in *Lulu*"
 Steven Larson (University of Michigan): "A Tonal Model of an 'Atonal' Piece: Schoenberg's Opus 15, No. 2"
 Fusako Hamao (Yale University): "An Approach to the Origin of the Twelve-Tone Method: Schoenberg's Sketches for the Unfinished *Symphony for Solo, Mixed Chorus and Orchestra*"

10:15–11:15 — CMS Concert: Works for Cello and Piano

- by **Contemporary American Composers**, Elliott Cheney (Austin, Texas), Cello, Suzanne Granham (Austin, Texas), Piano (Theatre, Robson Square Media Centre)
 Works by Victor Babin, Robert Muczynsky, Lucas Foss, Samuel Barber, Donald Grantham
 Host: Douglas Moore (Williams College)

10:15–11:45 — CMS SESSIONS

Seventeenth- and Eighteenth-Century Studies

(Plaza Ballroom East)

John G. Suess (Case Western Reserve University), Chair

- A. Louise H. Earhart (Columbus, OH): "Jean-Laurent de Bethizy's Influence on Rameau's Theories of Key Relationships and Systems of Bass Figuration"
 Barbara Harbach (Nazareth College of Rochester): "Three Women Composers of the Eighteenth Century"
 Lyn Huhler (Austin, Texas): "A Performer's Guide to French Classical Organ Music"

Theory Pedagogy (Grouse Room)

Claire Boge (University of Hartford), Chair

- Lisa Hanford (Rutgers University): "A Model for Teaching Tonal Voice Leading"
 E. Michael Harrington (Belmont College): "Non-Classical Music as a Resource for Harmonic, Melodic, and Metric Dictation"
 Charles H. Lord and Kate Covington (University of Kentucky): "Modular, Competency-Based, Computer-Assisted Learning: A Report On a Comprehensive Project to Improve Achievement and Morale in Undergraduate Music Theory"

Sunday

World Music Performance for the General Student

(Plaza Ballroom West)

William Malm (University of Michigan), Chair

- Patricia K. Shehan (Washington University, St. Louis), Kenneth R. Zuckerman (Basel, Switzerland), Patricia Harpole (California State University, Northridge), Presenters

10:30–12:00 — SEM SESSION

The Concept of Magam in West and Central Asia (Prince of Wales Room)

- Jozef Pacholczyk (University of Maryland, Baltimore County): "The Structure of Magam in the Classical Music of Kashmir"
 Liang, Mingyue (University of Maryland, Baltimore County): "The Melodies of Panjikar Mukamu in Xinjiang, China"
 Karl Signell (Hyattsville, MD): "The Game of Music: Neyzen Akagindüz Kurbay Plays Makam Rast"

11:30–12:30 — CMS Concert: Ensemble Sponsored by The

National Association of College Wind and Percussion Instructors (Theatre, Robson Square Media Centre)

CONFERENCE OVERVIEW

SESSION TOPICS, PERFORMANCES, AND JOINT ACTIVITIES

(See complete programme, pp. 2-19, for organizational meetings, locations of sessions, and other details.)

AMS	CMS	SEM	SMT
WEDNESDAY			
VANCOUVER ISLAND AND VICTORIA TOUR, 8:00-5:00			
THURSDAY P.M.			
VANCOUVER CITY TOUR, 1:00-4:30			
2:00-5:00 Sessions <ul style="list-style-type: none"> • Aspects of Antiquity • Northern Renaissance • Eighteenth-Century Keyboard Music (AMS/SMT) • Schubert and Chopin • Debussy 		2:00-5:00 Sessions <ul style="list-style-type: none"> • Improvisation and the Performer-Composer in Courts, Temples and Brothels • Musical Diversities: I • From Composer to Audience: The Production of 'Serious' Music in Canada 	2:00-5:00 Sessions <ul style="list-style-type: none"> • History of Theory • Twentieth Century: I • Eighteenth-Century Keyboard Music (AMS/SMT)
COCKTAIL RECEPTION HOSTED BY THE GOVERNMENT AND PEOPLE OF B.C. AND U.B.C. MUSIC DEPARTMENT, 5:15-7:00			
		8:00-9:30 Open Forum Current Issues	
CONCERT: ACADEMY OF ANCIENT MUSIC CHAMBER ENSEMBLE, Orpheum Theatre, Smythe at Seymour, 8:30			
	9:00-10:30 Concert The Montana Consort (Jazz, Classical, and Ethnic Music)	9:30-11:30 SEM Dance (All delegates welcome.)	
FRIDAY A.M.			
9:00-12:00 Sessions <ul style="list-style-type: none"> • Local Traditions in Medieval Monophony • Chanson and Madrigal • Eighteenth-Century Opera • C.P.E. Bach and Mid-Eighteenth-Century Style • Wagner and His Influence 	8:30-10:00 Sessions <ul style="list-style-type: none"> • The American Musician Abroad • Teaching Music History • A New Partnership in Music Teacher Education 10:00-10:45 Concert <i>Lontano</i> (Works of CMS Composers) 10:15-11:45 Sessions <ul style="list-style-type: none"> • Nineteenth- and Twentieth-Century Studies • Analytical Topics 11:00-11:45 Concert <i>Lontano</i>	9:00-12:00 Sessions <ul style="list-style-type: none"> • Music Values and the Study of Music • The Perception of Music • Ethnomusicological Approaches to Western Art Music 	9:00-12:00 Sessions <ul style="list-style-type: none"> • Pedagogy • Cognition and Perception • Classical Period

CONFERENCE OVERVIEW

AMS	CMS	SEM	SMT
FRIDAY P.M.			
<p>12:00–1:00 Forum Committee on Status of Women</p> <p>12:00–1:00 Concert Preethi de Silva, fortepiano (Keyboard Music of Mützel and Eckard)</p> <p>12:00–1:30 Lecture-Recital William Kinderman, piano (Beethoven's <i>Diabelli Variations</i>)</p> <p>12:00–2:00 Panel Publication on Music and Musicology</p> <p>1:00–2:00 Lecture-Recital Linton Powell, harpsichord (Keyboard Music of de Albero)</p>	<p>12:30–2:00 Sessions • A Century of Musicology • Developing Basic Academic Skills in General Education Courses</p>	<p>12:15–1:00 Concert Hebrew and Yiddish Songs (SEM/CMS) Claire Klein Osipov, singer</p>	
VANCOUVER CITY TOUR, 1:00–4:30			
	<p>1:15–2:00 Concert Adam Wodnicki, piano (Contemporary American Music)</p>		
PLENARY SESSION: Fact and Value in Contemporary Musical Scholarship, 2:15–5:15			
<p>6:00–7:30 No-Host Cocktail Reception (All delegates welcome.)</p>			<p>7:30–9:00 Informal Session Making a Place for Women</p>
CONCERT: EURO-CANADIAN FOLK MUSIC, Vancouver Folk Song Society, Cinema, Robson Square Media Centre, 8:30			
CONCERT: VANCOUVER CANTATA SINGERS and CBC VANCOUVER ORCHESTRA, Orpheum Theatre, 8:30			
SATURDAY A.M.			
NORTH SHORE TOUR, 8:00–2:00			
<p>9:00–12:00 Sessions • Liturgical Chant • Local Traditions in Renaissance Polyphony • Baroque Music and Rhetoric • Nineteenth-Century Opera • Russian Music</p>	<p>8:30–10:00 Sessions • American Studies • Music and Cognition: I • Music in the Life of Man (CMS/SEM)</p> <p>10:15–11:45 Session The Release from Tension and Anxiety Applied to Teaching</p>	<p>9:00–12:00 Sessions • Culture-Specific Theoretical Systems • Dance as a Determinant of Music • Bi-musicality and Musicianship • Native Canadian Traditions</p>	<p>9:00–12:00 Sessions • Twentieth Century: II • Time and Rhythm</p>

CONFERENCE OVERVIEW

AMS	CMS	SEM	SMT
SATURDAY P.M.			
12:00–1:00 Concert Bruno Biot, piano (Kalkbrenner Sonatas)	12:00–1:30 Sessions • Nineteenth-Century Studies • Current Theory Research		
12:00–1:30 Concert Eiji Hashimoto, harpsichord (Sonatas of D. Scarlatti)			
12:30–2:00 Concert Adel Heinrich, organ (Bach's <i>Die Kunst der Fuge</i>)			
DIM SUM LUNCHEON AND CONCERT OF CANTONESE MUSIC, 12:30–2:00			
1:00–2:00 Concert U. of Wash. Collegium Musicum			1:00–2:15 Keynote Address Arnold Whittall: The Theorist's Sense of History
1:00–2:00 Forum Gay and Lesbian Perspectives in Musicology			
	1:45–2:15 Concert Davis Brooks, violin Lois Svard, piano (Sonata, Op. 34, by Beach)		

2:00–5:00 Sessions • Medieval Polyphony • Festivals and Philosophers • Bach • Nineteenth-Century Symphonic Music • Twentieth-Century Topics	1:45–2:55 Session Danish Music	2:30–3:30 Charles Seeger Memorial Lecture Barbara Krader: Slavic Folk Music: Forms of Singing and Self-Identity	2:30–4:30 Sessions • Metaphors in Analysis • Romantic Period
	1:45–3:15 Session New Courses in the General Education Area		
	2:30–3:00 Concert Michael Boriskin, piano (Music by George Perle)		
	3:00–4:00 Session Afro-American Music		
	3:30–5:00 Session Music and Cognition: II		
	4:15–5:15 Panel The Canadian Musician		
7:30–8:30 Concert UC Davis Orchestra and UBC Choirs			7:30–9:00 Forum New Directions in Theoretical Research
KWAKIUTL MUSIC AND DANCE, Cinema, Robson Square Media Centre, 8:00–9:30			
VANCOUVER SYMPHONY ORCHESTRA, Orpheum Theatre, 8:30			

CONFERENCE OVERVIEW

AMS	CMS	SEM	SMT
SATURDAY P.M.			
<p>9:30 AMS/SMT Dance (All delegates welcome.)</p> <p style="text-align: right;">Ball</p>			<p>9:30 SMT/AMS Dance (All delegates welcome.)</p> <p style="text-align: right;">Ball</p>
SUNDAY A.M.			
<p>9:00-12:00 Sessions</p> <ul style="list-style-type: none"> • Renaissance Musical Institutions and Patrons • Handel • Haydn and Beethoven • Brahms • American Popular Music and Jazz 	<p>8:30-10:00 Sessions</p> <ul style="list-style-type: none"> • Medieval and Renaissance Studies • Music and Cognition: III • Composition 	<p>9:00-12:00 Sessions</p> <ul style="list-style-type: none"> • Analysis from Sound Recordings • Musical Diversities: II • Pathways to Musical Experience • The Concept of Maqam in West and Central Asia 	<p>9:00-12:00 Sessions</p> <ul style="list-style-type: none"> • Text and Music • Berg and Schoenberg
NORTH SHORE TOUR, 10:00-4:00			
	<p>10:15-11:15 Concert</p> <p>Elliott Cheney, cello Suzanne Grantham, piano (Contemporary American Music)</p>		
	<p>10:15-11:45 Sessions</p> <ul style="list-style-type: none"> • Seventeenth- and Eighteenth-Century Studies • Theory Pedagogy • World Music Performance for the General Student <p>11:30-12:30 Concert</p> <p>NACWPI Ensemble</p>		
SUNDAY P.M.			
VANCOUVER CITY TOUR, 1:00-4:30			
MONDAY			
VANCOUVER ISLAND AND VICTORIA TOUR, 8:00-5:00 p.m.			

REGISTRATION

AMS (Hotel Vancouver, British Columbia Foyer)

Thursday, 12:00 – 6:00
Friday and Saturday, 9:00 – 6:00

CMS (Hyatt Regency, Regency Ballroom Foyer)

Thursday, 11:00 – 6:00
Friday and Saturday, 8:00 – 5:00
Sunday, 8:00 – 12:00

SEM (Hyatt Regency, Regency Ballroom Foyer)

Thursday, 11:00 – 6:00
Friday and Saturday, 8:00 – 5:00

SMT (Four Seasons, Third-Floor Reception Area)

Thursday, 12:00 – 6:00
Friday and Saturday, 8:00 – 6:00

EXHIBITS

(Hotel Vancouver, British Columbia Ballroom)

Thursday, 1:30 – 6:00
Friday and Saturday, 9:00 – 6:00
Sunday, 9:00 – 12:00

SPECIAL EXHIBIT

(Hotel Vancouver, British Columbia Foyer)

“The Lives of J.S. Bach, Handel, and Schütz,”
sponsored by the Goethe Institute,
Vancouver German Cultural Centre

Thursday, 12:00 – 6:00
Friday and Saturday, 9:00 – 6:00
Sunday, 9:00 – 12:00

LOCAL ARRANGEMENTS

Gregory Butler and H. Robert Cohen, Co-Chairs
William Benjamin

Wallace Berry

Dimitri Conomos

J. Evan Kreider

John Sawyer

Alan Thrasher (SEM Coordinator)

The Committee gratefully acknowledges the cooperation of the following individuals and organizations in providing:

all local arrangements for the CMS

Robby D. Gunstream

pianos for the conference

Yamaha Canada Music, Ltd., through Tom Lee Music Co., Ltd.,
Vancouver

additional pianos for the CMS

Steinway and Sons, New York

shipment of pianos

Salmon's Transfer Ltd., Vancouver

financial assistance

British Columbia Ministry of Provincial Secretary and Government
Services

Department of Music, UBC

President's Office, UBC

The Leon and Thea Koerner Foundation, Vancouver

The British Council

a special exhibit and other assistance

Goethe Institute, Vancouver German Cultural Centre

a harpsichord

Vancouver Society for Early Music

concert facilities

Christ Church Cathedral, Vancouver

assistance to SEM

Sandra Davies

Robby D. Gunstream

Dan Kenning and the Vancouver Folk Song Society

Daniel M. Neuman

Mary Riemer-Weller

Lorraine Sakata

Norman Stanfield

Ron Stuart

Wendy Stuart

signs

John Burgess

clerical and other services of UBC students and staff

Sean Bickerton

Jean-Michel Boulay

Alan Hetherington

Cortland Hulberg

Laurie Jang

Gregory Johnston

Jane Lamoureux

Isabel McCaughran

Charles Morrison

Patrick Payne

Valerie Pusey

Bill Rasmussen

Christine Roberge

Barb Siemens

Sandy Thacker

Peg Weaver

piano tuning and regulating

Hans Krebs

EXHIBITORS

- A-R Editions, Inc., 315 West Gorham Street, Madison, WI 53703
 American Folklife Center and Archive of Folk Culture, Library of Congress, Washington, DC 20540
 AMS 50, Dept. of Music, New York University, 24 Waverly Place, Room 268, New York, NY 10012
 Association for Technology in Music Instruction, Dept. of Music, University of Delaware, Newark, DE 19716
 Association of American Univ. Press, One Park Ave., New York, NY 10016
 Broude Brothers Ltd., 170 Varick Street, New York, NY 10013
 William C. Brown Pub., 2460 Kertper Blvd., Dubuque, IA 52001
 Cambridge University Press, 32 East 57th Street, New York, NY 10022
 Center for Black Music Research, Columbia College, 600 S. Michigan Ave., Chicago, IL 60605
 Center for Computer Assisted Research in the Humanities, 525 Middlefield Rd., Menlo Park, CA 94025
 Collier MacMillan Canada Inc., 50 Gervais Drive, Don Mills, ONT. M3C 3K4
Current Musicology, Dept. of Music, Columbia University, New York NY 10027
 Da Capo Press, Inc., 233 Spring Street, New York, NY 10013
 European American Music Distributors, P.O. Box 850, Valley Forge, PA 19482
 Foreign Music Distributors, 305 Bloomfield Ave., Nutley, NJ 07110
 Galaxy Music Corporation, 131 West 86th Street, New York, NY 10024
 Garland Publishing Inc., 136 Madison Ave., New York, NY 10016
 Gordon & Breach, 50 West 23 Street, New York, NY 10010
 Grove's Dictionaries of Music, 15 East 26 Street, New York, NY 10010
 Harvard University Press, 79 Garden Street, Cambridge, MA 02138
 G. Henle/USA Inc., 0380 Page Industrial Blvd., St. Louis, MO
 Indiana University Press, 10th & Morton Streets, Bloomington, IN 47405
 Institute for Studies in American Music, Brooklyn College, Brooklyn, NY 11210
Journal of Musicology, P.O. Box 4516, Louisville, KY 40204
 Mark of the Unicorn, 222 Third St., Cambridge, MA 02142
 McGill Records, Faculty of Music, McGill University, 555 Sherbrooke Street West, Montreal, P.Q. H3A 1E3
 Medici Music Press, 4206 Ridgewood, Bellingham, WA 98226
 Minkoff Editor, 46, Chemin de la Mousse, Chêne-Bourg/Geneva, SWITZERLAND 1225
 Music for London Entertainment, 29 Mount Sion, Tunbridge Wells, KENT TN1 1TZ
 W.W. Norton & Co. Inc., 500 Fifth Avenue, New York, NY 10110
 Oxford University Press, 200 Madison Avenue, New York, NY 10016
 Pendragon Press, 162 West 13th St., New York, NY 10011
 C.F. Peters Corp., 373 Park Ave. S., New York, NY 10016
 Prentice-Hall, Inc., College Division, Englewood Cliffs, NJ 07632
 Princeton University Press, 41 William St., Princeton, NJ 08540
 Schirmer Books, 866 Third Avenue, New York, NY 10022
 Temporal Acuity Products, Inc., 300 120th Ave., N.E., Bldg. 1, Suite 200, Bellevue, WA 98005
 Theodore Front Music Literature, Inc., 16122 Colasset St., Van Nuys, CA 91406
 UMI Research Press, 300 N. Zeeb Road, Ann Arbor, MI 48106
 University of California Press, 2120 Berkeley Way, Berkeley, CA 94720
 University of Chicago Press, 5801 S. Ellis Ave., Chicago, IL 60637
 University of Illinois Press, 54 E. Gregory Dr., Champaign, IL 61820
 Work Publishers, 444 Park Avenue South, New York, NY 10016
 Yale University Press, 92A Yale Station, New Haven, CT 06520

American Musicological Society

The 1986 (fifty-second) annual meeting of the American Musicological Society will be held 6-9 November at Cleveland, Ohio.

Board of Directors

President: Margaret Bent
Vice-President: Robert L. Marshall
Past President: Richard Crawford
Secretary: Ruth Steiner
Treasurer: Alvin H. Johnson

Directors-at-Large:

1984-85: Ellen Rosand, James Webster, Craig Wright
 1985-86: Philip Brett, Harold S. Powers, Maynard Solomon

Editor-in-Chief, *Journal of the AMS*: John Walter Hill
Review Editor, *Journal of the AMS*: Lowell E. Lindgren
Editor of *Doctoral Dissertations in Musicology*: Cecil Adkins
Editor of the *AMS Newsletter*: Kristine Forney
Archivist of the AMS: Clayton Henderson
Executive Director of the AMS: Alvin H. Johnson

Council

Secretary 1986-87: Ruth Solie

Term 1984-86: James R. Anthony

Peter Bloom
 Laurence Dreyfus
 Jeffrey Kallberg
 Robert Morgan
 Margaret Murata
 John Nadas
 Curtis A. Price
 Christopher Reynolds
 Alexander Silbiger
 Elaine Sisman
 Jane R. Stevens
 Rose Subotnik
 R. Larry Todd

Term 1985-87: M. Elizabeth Bartlet

Karol Berger
 Lance Brunner
 Walter M. Ertisch
 Bruce Gustafson
 Jan W. Herlinger
 Owen Jander
 Peter M. Jefferts
 Janet M. Levy
 Marina McLymonds
 Roger Parker
 Leonard Ratner
 John H. Roberts
 Edward H. Roessner
 Thomas Warburton

Term 1986-88: Richard J. Agee

Thomas Binkley
 Claire Brook
 Gerhard Herz
 Michael A. Keller
 Kim A. Kowalke
 Murray Lefkowitz
 Ralph P. Locke
 Edward C. Nowacki
 Jessie Ann Owens
 Benito V. Rivera
 Marie Rolf
 Reinhard Strohm
 Jurgen Thym
 Susan Youens

AMS

Chapter Representatives to the Council

Term 1984 - 86: Allegheny: Irving Godt

Midwest: Alexander Main
South Central: Ernest Harris
Southeast: James R. Hines
Southern: John O. Robison

Term 1985 - 87: Capital: Laura Youens

Greater New York: Katherine Rohrer
Mid-Atlantic: Carl B. Schmidt
New York State St. Lawrence: Stephen Bonta
New England: Bryan R. Gilliam

Term 1986 - 88: Pacific Southwest: David Brodbeck

Rocky Mountain: Harrison Powley
Southwest: Craig Lister
Northern California:
Pacific Northwest: Henry J. Eickhoff

Student Representatives to the Council

Term 1986: Allegheny: Scott Schwartz

Capital:
Greater New York:
Mid-Atlantic: Laura Fry
Midwest:
New England:
New York State St. Lawrence: Cliff Eisen
Northern California: J. Stephen Parkany
Pacific Northwest:
Pacific Southwest:
Rocky Mountain: Daniel C. Jones
South Central: Christine Smith
Southeast: Doris Powers
Southern: Mary Elaine Yountz
Southwest: Gary D. Gibbs

(Note: Terms actually begin with the Annual Meeting in the year prior to the first year of the term.)

1985 Program Committee

Charles M. Atkinson, Chair, School of Music, Ohio State University, Columbus, OH 43210; Mark DeVoto, Douglas Johnson, Margaret Murata, Anne Dhu Shapiro, Tom R. Ward

1985 Performance Committee

Richard E Tamuskin, Chair, Music Dept., Columbia University, New York, NY 10027; Philip Brett; J. Evan Kreider

1986 Local Arrangements Committee

John G. Suess, Chair, Dept. of Music, Case Western Reserve University, Cleveland, OH 44106

1986 Program Committee

Douglas Johnson, Chair, Dept. of Music, Douglass Campus OMB, Rutgers University, New Brunswick, NJ 08903

1986 Performance Committee

Kay Jaffee, Chair, 305 Riverside Drive, No. 5-A, New York, NY 10025

College Music Society

The twenty-ninth annual meeting of the College Music Society will be held in Miami, Florida, 9 - 12 October 1986.

Board

President: Phillip Rhodes, Carleton College

Immediate Past-President: Arthur Tollefson, University of North Carolina at Greensboro

Vice-President: John G. Suess, Case Western Reserve University

Secretary: Maureen A. Carr, Pennsylvania State University

Treasurer: Barbara H. Noel, Southeastern Massachusetts University

Composition: Elliott S. Schwartz, Bowdoin College

Ethnomusicology: William Malin, University of Michigan

Music Education: James C. Carlson, University of Washington

Music in General Studies: Donald Funes, Northern Illinois University

Musicology: Frank Tirro, Yale University

Performance: Ann M. Woodward, University of North Carolina, Chapel Hill

Theory: Richmond Browne, University of Michigan

Committee Chairs

Constitution: Robert Sutton, University of Massachusetts

Publications: Stephen Kelly, Carleton College

Program: Gerard Béhague, University of Texas, Austin

Resolutions: K. Marie Stolba, Indiana University-Purdue University

Status of Minorities: Samuel A. Floyd, Center for Black Music Research, Chicago

Status of Women: Nancy Reich, Hastings-on-Hudson, New York

Council of Chief Executives of Regional Chapters

Arizona: James O'Brien, University of Arizona

European: Kate Waring, Königswinter, West Germany

Great Lakes: Charles G. Boyer, Illinois Wesleyan University

Great Plains: Paul J. Revit, University of Missouri

Mid-Atlantic: Joseph Distefano, East Carolina University

Northeast: Douglas Moore, Williams College

Pacific Central: Brigitte Moyer, College of Notre Dame

Pacific Northwest: Barbara Lundquist, University of Washington

Pacific Southern: William Reynolds, University of California, Riverside

Riverside

Rocky Mountain: Donna Bogard, University of Colorado, Denver

South Central: Digby Bell, University of Oklahoma

Southern: David Z. Kushner, University of Florida

Council of Past Presidents

William W. Austin, Cornell University

Walter S. Collins, University of Colorado

W. Loran Crosten, Boonville, New York

Harry B. Lincoln, State University of New York, Binghamton

Barbara English Maris, The Catholic University of America

William H. Reynolds, University of California, Riverside

Robert Trotter, University of Oregon

Robert J. Werner, University of Arizona

Chappel White, Kansas State University

Advisory Council

Samuel Adler, Eastman School of Music

Warren E. George, University of Cincinnati

Suzanne Roy, Pennsylvania State University

Margaret V. Sandreski, Salem College

Douglas Seaton, Florida State University

Gail deStrowlinski, University of Oklahoma

CMS

Editors

College Music Symposium: Theodore Albrecht, Park College
Bibliographies in American Music: James R. Heintze, The
 American University

Proceedings: Roger E. Foltz, University of Nebraska, Omaha

National Office

Robby D. Gunstream, Executive Director
 Morris A. Phibbs, Staff Assistant for Operations
 Darlene Symmonds, Staff Assistant

Society for Ethnomusicology

The 1986 annual meeting of the Society for Ethnomusicology will be held 16-19 October at the Eastman School of Music, University of Rochester.

Board of Directors

President: Carol E. Robertson, University of Maryland, College Park

President-Elect: Robert Garfias, University of California, Irvine

First Vice-President: Steven Feld, University of Texas, Austin

Second Vice-President: Charlotte J. Frisbie, University of Southern Illinois

Secretary: Joseph C. Hickerson, Library of Congress

Treasurer: Judith McCulloh, University of Illinois Press

Members at Large: Dale A. Olsen, Florida State University; Ruth M. Sone, Indiana University

Program Committee

Hazel Chung, Mantle Hood, Roderic Knight, Lorna McDaniel,
 Regula Burckhardt Qureshi, Lorraine Sakata, Anthony Seeger,
 Bonnie Wade

Charles Seeger Memorial Lecture

Barbara Krader, "Slavic Folk Music: Forms of Singing and Self-Identity"

1986 Local Arrangements Chair

Ellen Koskoff, Eastman School of Music

1986 Program Committee Chair

Stephen Blum, York University

Society for Music Theory

The 1986 (ninth) annual meeting of the Society for Music Theory will be held 6-9 November at Indiana University.

Executive Board

President: Wallace Berry, University of British Columbia

President-Elect: David Lewin, Harvard University

Vice-President: Douglas Green, University of Texas, Austin

Secretary: Richmond Browne, University of Michigan

Treasurer: Mary Wemmerstrom, Indiana University

Members at Large: David Beach, Eastman School of Music;

Marianne Kiehan-Gilbert, Indiana University; Joel Lester, City

University of New York; Dorothy Payne, University of Texas,

Austin; Benito Rivera, Indiana University; John Rothgeb, State

University of New York, Binghamton; Janet Schmalfeldt,

McGill University

SMT

Publications Committee

William Caplin, Chair, McGill University; Elwood Derr,
 University of Michigan; Christopher Hasty, Yale University;
 Jonathan Kramer, University of Cincinnati; Robert Wason,
 Eastman School of Music; Wallace Berry, University of British
 Columbia, and Lewis Rowell, Indiana University, *ex officio*

Program Committee, 1985

William Benjamin, University of British Columbia, Chair; Jerome
 Kohl, Seattle, Washington; Eugene Narmour, University of
 Pennsylvania; Alexandra Pierce, University of Redlands; Pieter
 van den Toorn, Novato, California; Wallace Berry, University of
 British Columbia, *ex officio*

Program Committee, 1986

Vernon Kiewer, Indiana University, Chair; Edward Chudacoff,
 University of Michigan; Anne C. Hall, Wilfred Laurier
 University; Robert Morgan, University of Chicago; William
 Benjamin, University of British Columbia; David Lewin,
 Harvard University, *ex officio*

Local Arrangements Committee, 1986

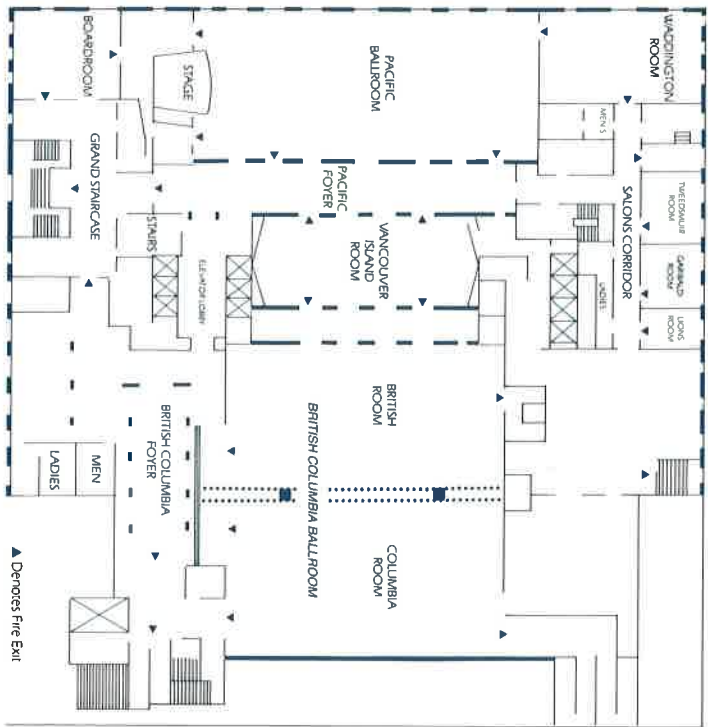
Mary Wemmerstrom, Indiana University, Chair; Marianne Kiehan-
 Gilbert, David Neumeier, and Gary Wittlich, Indiana
 University

Editors

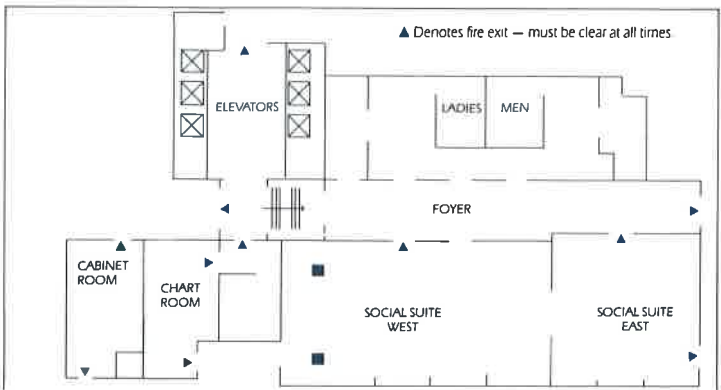
Lewis Rowell, Indiana University, *Music Theory Spectrum* through
 Vol. 7; John Clough, State University of New York, Buffalo,
Music Theory Spectrum from Vol. 8; Richard Parks, Southern
 Methodist University, *SMT Newsletter*

HOTEL VANCOUVER

Convention Floor

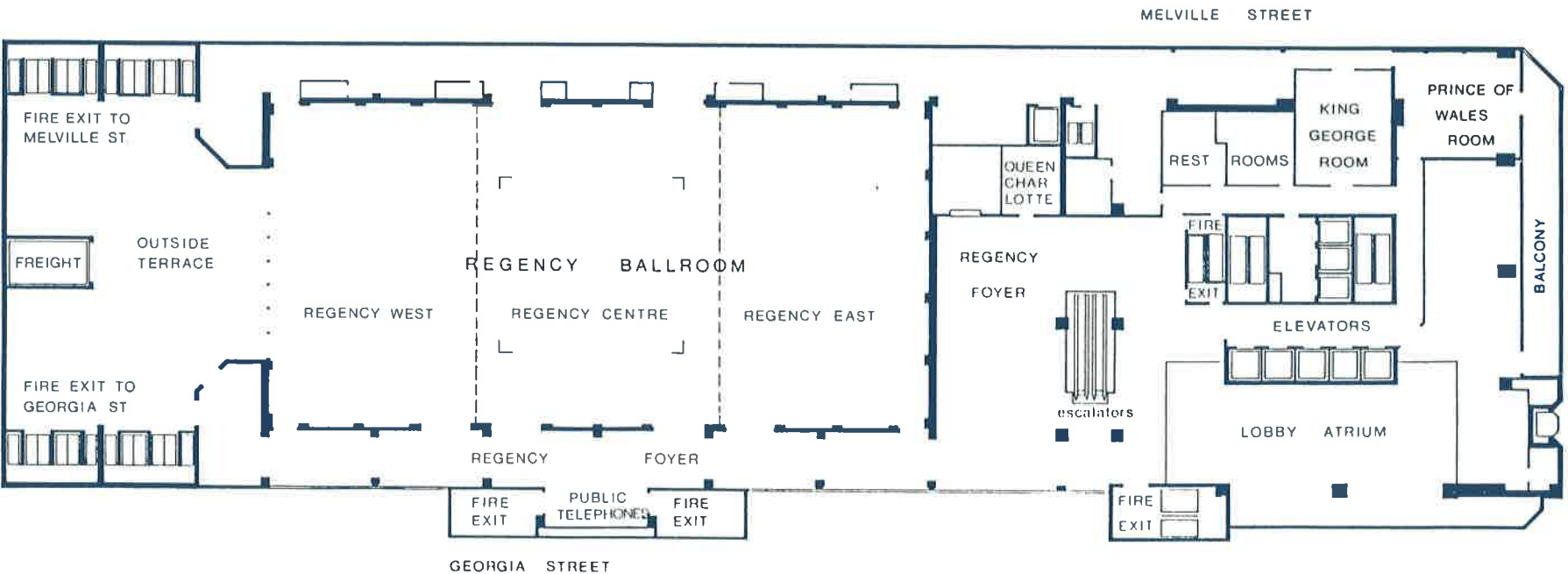


Social Suite Floor



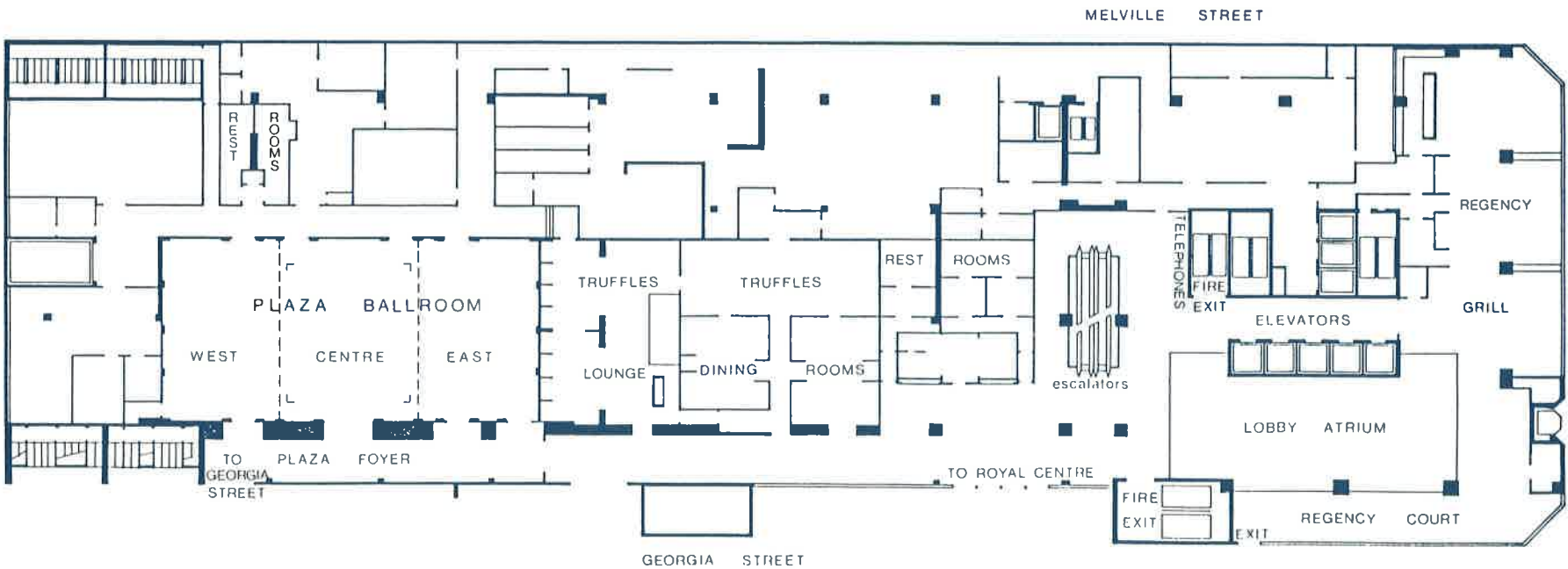
HYATT REGENCY

Convention Level



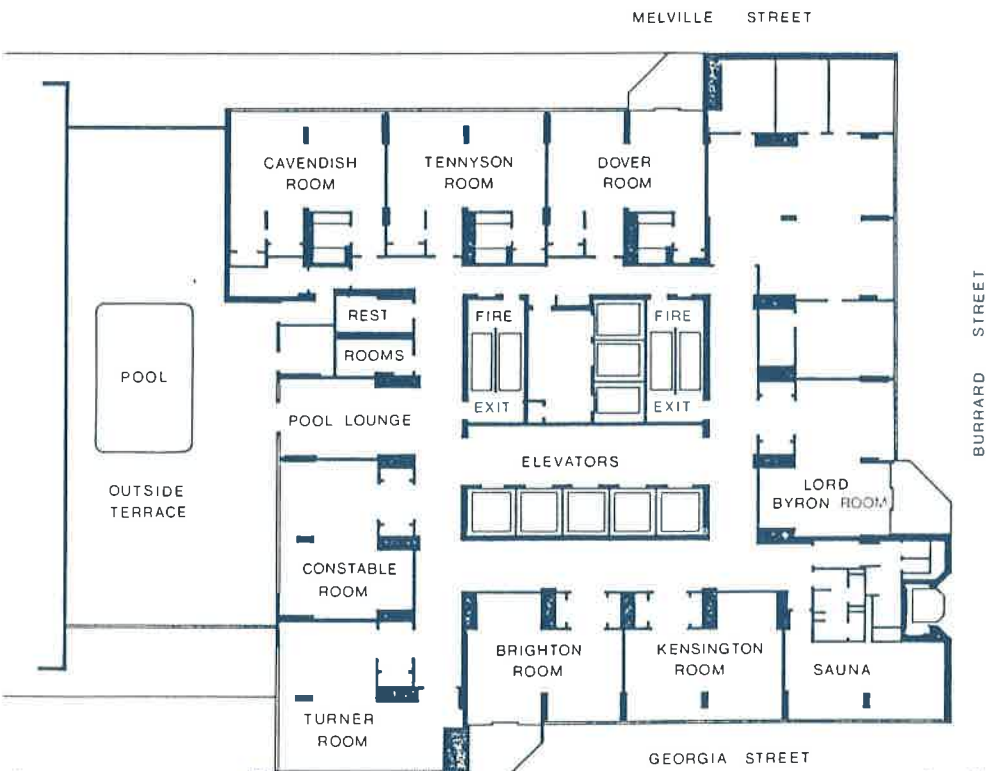
HYATT REGENCY

Plaza Level

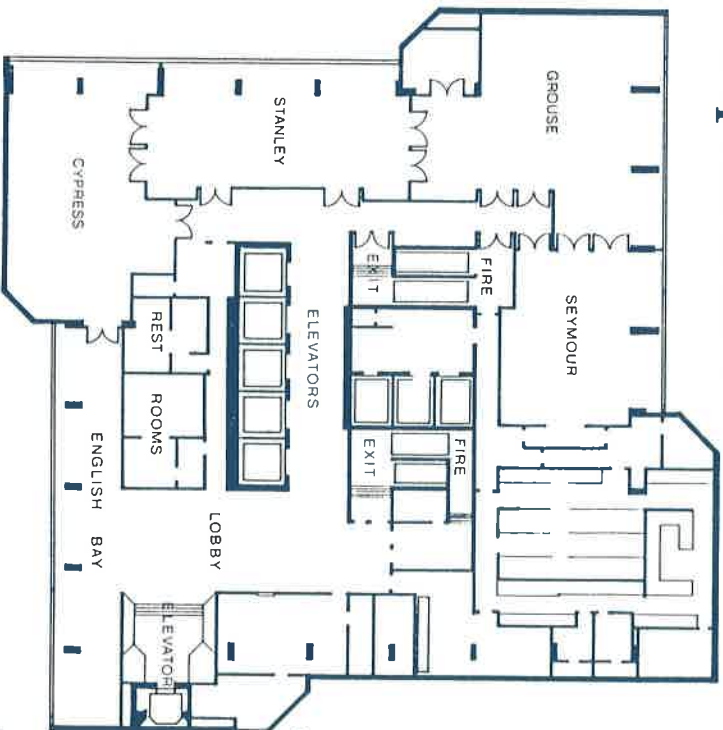


HYATT REGENCY

Terrace Level

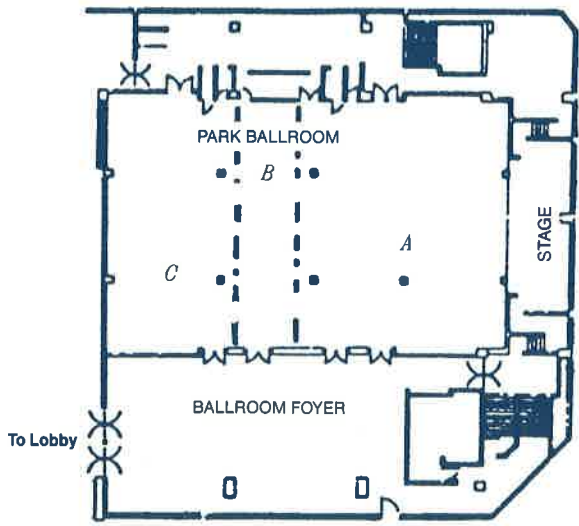


Perspectives Level



THE FOUR SEASONS

2nd (Main Floor)



3rd (Meeting Floor)

